

Awards for Planning Excellence

National

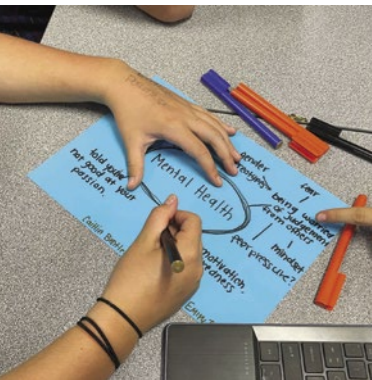


20 AWARDS FOR
22 Planning
Excellence

PLANNING INSTITUTE
OF AUSTRALIA



Contents



Message from the Chief Executive Officer 04

Message from the President/National Awards Convenor 05

2022 PIA National Awards Sponsors 06

2022 PIA National Awards Judges 10

About PIA 13

Award Winners & Commendations 14

 Young Planner of the Year 18

 Aboriginal & Torres Strait Islander Planning 20

 Climate Change & Resilience 24

 Community Wellbeing & Diversity 26

 Great Place 28

 Improving Planning Processes 30

 Planning Research 32

 Stakeholder Engagement 34

 Strategic Planning Project 36

 Technology & Digital Innovation 38

 Tertiary Student Project 40

2022 Award Nominations 44

Message from the Chief Executive Officer

04 Message from the Chief Executive Officer

At its most stripped-down, urban planning is the design and regulation of spaces and places where our communities can thrive, even in the face of challenges from our changing climate, global pandemics and economic shocks. Planning's breadth and complexities arise because its practitioners strive to ensure towns, cities and regions are developed sustainably, foster equity, fairness and access. Planners want to make economic, environmental and social progress for current as well as future generations. That's not easy to do when new technologies are unfolding rapidly, when our populations are growing and demanding new choices and options. For planning to respond by enabling and driving sustainable development, it must be creative, enhancing, and constantly improving.

The Planning Institute of Australia's National Awards for Planning Excellence showcase these attributes, and more, across a range of areas and environments and celebrates the best that planning can be. In 2021 we introduced of a new set of award categories. These were designed to be more contemporary and draw focus to the major planning and societal

challenges for planners. We were delighted with the response when measured by numbers of nominations and quality of those nominations. The awards started with state and territory judges selecting the best examples of planning in their jurisdictions. These winners were elevated for judging by a national panel, culminating in the National Awards for Planning Excellence ceremony. When we celebrate our high achievers, we not only show that #planningmatters but we inspire each other to always aim high. With that in mind, I commend success stories of 2021 to you.



A handwritten signature in black ink that reads "David Williams".

David Williams
Chief Executive Officer

Message from the President/ National Awards Convenor

05 Message from the President/ National Awards Convenor

This was my first year in the role of PIA's National Awards Convenor and the first year for these Award categories. Every five or so years, the categories are reviewed by the National Board and altered if needed to ensure they reflect the changes that have occurred in the profession. This year's categories have been improved so that they better recognise the new roles that planners play and celebrate professionals who are tackling the big issues we are facing head-on.

You will notice that some categories have been removed, some have been slightly altered and some are completely new to the program. And it was great to see that we've had 55 outstanding entries across 11 categories come through the state award programs as winners and into these National Awards as finalists.

The variety of nominations was impressive, the new categories were embraced, and the finalists all showcase leading practice for the profession. It was a true representation of the amazing work our members do each and every year to help create great places.

My thanks to the dedicated team of judges (one from every mainland State and Territory of Australia) who painstakingly reviewed all nominations and made considered and astute comments in advance of us all gathering to make our final decisions.

I would also like to acknowledge the awards teams in the States and Territories, all of whom played a crucial role in getting these nominations to the National Awards arena.

On behalf of the judging panel, I congratulate all the National Award winners and commendation recipients, and I encourage all planners to start preparing their nominations for 2022-23.



A handwritten signature in black ink that reads "Darren Crombie".

Darren Crombie RPIA (Fellow)
President
National Awards Convenor

2022 PIA National Awards Sponsors

PRINCIPAL SPONSOR

06 INCLUDING ABORIGINAL & TORRES STRAIT ISLANDER PLANNING CATEGORY SPONSOR



City of **HOBART**

As Tasmania's capital city, Hobart is a major service centre and is home to a wide variety of businesses. Hobart's festivals and cultural life are major attractions, as are its cultural heritage, food and wine, markets and distinctive landscape, all of which strengthen its reputation as a desirable destination for travellers.

The Hobart region is home to tens of thousands of years of Palawa people – Tasmanian Aboriginal people - continuing culture. Our communities are known for their connectedness, and many people love the smaller scale of Hobart and connections to the natural environment. As of 2020, Hobart's municipal area is home to over 55 000 people spread across 78 square kms. Although Hobart is one of the most remote capital cities in the world, it feels like a city built for people, a city where our tallest landmark is kunanyi/Mt Wellington and our heritage buildings are our greatest loves.

www.hobartcity.com.au

CLIMATE CHANGE & RESILIENCE

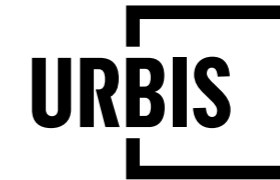
ARUP

Arup's primary goal is to plan and develop a truly sustainable built environment. This means that in all our work, we aim to identify a balance between the needs of a growing world population and the finite capacity and health of our planet.

Our insights are formulated over 75 years spent developing every aspect of the modern city, ensuring our communities thrive and that our clients across the public and private sector make the soundest investments and achieve the highest quality results.

www.arup.com/expertise/services/planning/masterplanning

COMMUNITY WELLBEING & DIVERSITY



Urbis has one simple goal – to shape cities and communities for a better future. It's something they, and through their international business Cistri, achieve by drawing together a network of the brightest minds.

They are a creative community of practice experts, working to deliver fresh thinking and independent advice and guidance – all backed up by real, evidence-based solutions. Whether you engage them in the areas of planning, design, heritage, policy, valuations, transactions, economics, strategy or research, you know you're dealing with the experts who will connect you to a better outcome, every time.

urbis.com.au

GREAT PLACE



At Walker Corporation we're proud to be Australia's largest private, diversified development company. We've over 50 years' experience and have delivered over 1000 projects that span the length and width of Australia, and internationally: in America, Canada, Fiji and Malaysia.

We're one of the few developers with expertise across all areas of the property spectrum, from residential through to master planned communities, retail, commercial, industrial and resort living. What is most important to us is that they serve their respective communities well, incorporating leading edge engineering, technology and ecologically sustainable development practises.

www.walkercorp.com.au

08 IMPROVING PLANNING PROCESSES



Kelliedy Jones Lawyers is a law firm like no other.

You won't find us standing around in suits spouting legal jargon. What you will find is a legal practice run by passionate professionals at the top of their game.

We focus on delivering legal solutions through deep knowledge and a commitment to innovation. We give guidance and direction in plain English, so you don't have to Google anything after a meeting with us.

We have an approachable team of people who work hard, enjoy life and are great at what they do. Reflecting this, our practitioners are recognised nationally through Doyle's Guide and Best Lawyers.

kelliedyjones.com.au

PLANNING RESEARCH



Through academic excellence, we make Tasmania, and the world, a better place.

Our isolated location and small population mean we do things differently.

As creative thinkers and problem solvers, we generate powerful ideas both for, and from, our island home.

Our creative minds capture our unique land and seascapes. Our institutions lead in medical, agricultural, social and environmental research.

Our small setting allows us to test big ideas, plan for the future, and generate better outcomes for the world. We welcome all enquiring minds, from near and far, to join our pursuit.

www.utas.edu.au

STAKEHOLDER ENGAGEMENT



Colin Biggers & Paisley Lawyers has a century-long history of genuine expertise creating solutions and delivering legal services to prepare our clients for the challenges of tomorrow. Our purpose is to work collectively to build and secure the future of our clients, colleagues and community.

Our Planning, Government Infrastructure and Environment group has earned a reputation for planning, designing and executing legal and policy solutions for large scale development and infrastructure projects, including new cities, towns and communities. The solutions we design extend beyond legal and policy advice and represent reasoned and commercially focused outcomes.

www.cbp.com.au

STRATEGIC PLANNING PROJECT



Mac Point is the largest urban renewal project in Tasmania's history and sits alongside Hobart's iconic waterfront and CBD.

The 9.3-hectare site will deliver an innovative arts, culture, tourism, and science precinct, becoming a truly extraordinary space for Tasmania and building on the state's internationally renowned reputation.

Mac Point site will consist of seven precincts to visit, work, or even call home. Among these will be residential and visitor accommodation, retail, office space and a state-of-the-art Antarctic and Science Precinct. Half of the site will also be dedicated to open space.

www.macpoint.com

TECHNOLOGY & DIGITAL INNOVATION



More than 83% of Australians live in an LGA covered by .id (informed decisions) information tools.

For more than 20 years, we've worked to build an enterprise that contributes to a good society. Our specialists have deep expertise in demographics, economics, housing and population forecasting. They work closely with spatial analysts and software developers to uncover and communicate stories of people and places.

We work collaboratively with 300+ councils around Australia, helping local government decisions-makers make informed decisions by providing the best possible local data and analysis.

Our services include publicly available subscription-based information tools and bespoke consulting.

home.id.com.au

TERTIARY STUDENT PROJECT



Planned Resources are a boutique recruitment agency, with a focus on providing a high-quality service to the town planning profession.

Our energies are spent serving a select number of clients and candidates in a consultative open manner in a market we understand, have experience within and extensive networks throughout.

We commit to providing a high level of customer service and providing timely follow-up and feedback at all times. We promise to be upfront in our dealings with you, and not shy away from having the "difficult conversations" which will benefit your job/candidate search in the longer term.

www.plannedresources.com.au

National Awards

2022 PIA National Awards Judges



*Darren Crombie RPIA (Fellow)
National Awards Judge Convenor*

Darren is a Principal and Director with E3 Advisory, an independent, employee owned infrastructure advisory firm providing strategic services to clients across Australia and internationally.

Darren has some 25 years experience in the Australian infrastructure, planning, economic development, and transport sectors. In that time, he has held senior executive roles in the infrastructure, planning and economic development portfolios in the Queensland Government, and in the transport and infrastructure portfolio in the Australian Government. His most recent role prior to joining E3 was as Queensland's Deputy Director General infrastructure policy and planning.

Darren holds an Honours degree and a research Masters degree in Regional and Town Planning from the University of Queensland, and an Executive Master of Public Administration from the Australian National University and the Australia New Zealand School of Government. He is a Registered Planner and has been a member of PIA since 1996 and is a member of the Australian Institute of Company Directors. He has previously represented Australia on UN and APEC bodies.

Darren became the National President of the Planning Institute of Australia in November 2020 after having served as the Queensland Director and chair of the Policy and Advocacy Committee since 2014.



Melanie Bradley RPIA

As a registered planner, Melanie has been contributing to PIA WA for almost a decade since 2012 as Vice-President, WA Awards judge and convenor.

She has worked with the State Department of Planning, Lands and Heritage for a decade, 2008-2018 and rejuvenated a business she founded in 1990, Landplan Associates, after retiring from the Department. She is an urban designer, urban planner and Landscape Architect, registered with the Australian Institute of Landscape Architects, and, previously, with the American Society of Landscape Architects. As a Landscape Architect/Planner, she has used her competence in all aspects of the built environment (site planning, design documentation, construction documentation, specifications and project management) to influence policies and plans at a State level.



Liz de Chastel RPIA (Life Fellow)

Liz is an experienced planner and policy adviser with over 30 years experience working in complex urban, regional and social planning settings, policy development and advocacy. Liz has worked in leadership roles within the NFP sector, private sector and government in the NT, Qld and ACT.

Liz is currently an Executive Director Policy with the Australian Local Government Association, a federated organisation representing 537 local governments. In this role Liz provides advice to the ALGA Board, ALGA President and jurisdictional committees on national policy issues impacting on local government such as Closing the Gap, climate change, housing, Federal Budget, transport and infrastructure.

Liz has been the chair of the ACT PIA Division Awards judging committee since 2015 and is a PIA mentor to young planners.



Heidi Goess MPIA

Heidi is an Urban and Regional Planner at Plan Place and is proud to provide specialised strategic and statutory planning advice to local government, private developers and the community.

Before establishing Plan Place, Heidi has had a diverse range of experience over more than 20 years in the public and private sector in South Australia and Tasmania. Over this timeframe, Heidi has worked in state and local government; in policy development both in the statutory and strategic context. Most recently, Heidi enjoys assisting community groups and networks to help them through the planning reform process in Tasmania or amendments to planning schemes.

Heidi's passion is to implement planning outcomes that assist developers and government to navigate and understand the community voice, strives to incorporate best planning practice seeking sustainable land use outcomes supported by evidence-based planning.



Lisa Kendal MPIA

Lisa is a passionate and highly regarded planning professional. Lisa has expertise in land use and environmental planning, and worked in a number of leadership roles across the public, private and not-for-profit sectors. Lisa has a diverse professional background across disciplines including strategic, rural and regional planning, sustainability and environmental management, governance and community and stakeholder engagement.

Lisa is currently a Senior Panel Member at Planning Panels Victoria, and previously worked as a sessional Panel Member 2015 – 2017. Lisa worked as Manager Strategic Planning at the City of Ballarat prior. Lisa is a member of PIA, actively involved with PIA Women's Planning Network and as a mentor through PIA Leadership Program, and was the 2019 PIA Female Achiever of the Year.

Lisa has a keen interest in recognising and promoting excellence in planning, and has been a judge of the PIA Victoria Awards in 2019 and 2020, and was Co-convenor in 2021.



Jenny Rudolph (Fellow)

Jenny is the Executive Director responsible for the review and development of the Greater Sydney Region Plan at Greater Sydney Commission. Prior to joining GSC, Jenny was the Director Local Strategies and Plan Making at NSW Department of Planning, Industry and Environment, focusing on planning proposals and local planning reforms. Jenny was for 11 years, a Director and owners of the Urban and Regional Planning Practise of Elton Consulting. Jenny is a town planner with over 30 years of experience and has worked in both the public/government and private sectors with extensive experience in strategic and statutory planning, project management and facilitation of small and large projects in both greenfield and urban renewal development. Jenny also undertakes community and stakeholder consultation as part of the project implementation.

Jenny was the PIA NSW President for 2017 and 2018, appointed as PIA Board Director in 2018.



Stephen Smith RPIA (Fellow)

Stephen is the Planning Reform Partner with the Local Government Association of South Australia with forty years' experience working in both local and regional government. His career has seen him spend 15 years in local government both in the UK and South Australia.

Between 2000 and 2016, Stephen held roles with the Onkaparinga Catchment Water Management Board and the Adelaide and Mount Lofty Ranges Natural Resources Management Board and guided the development of the first NRM Plan in South Australia which was recognised with both State and National Planning awards.

In 2016 Stephen commenced working with the LGA as Director of Policy and during the past three years as the Planning Reform Partner supporting local government with the planning reforms and the implementation of the new planning system.

Stephen is a Fellow of the Planning Institute of Australia and National Director and in 2017 was recognised as the South Australian Planner of the Year.



Joshua Walker MPIA

Josh is passionate about planning for cities and regions. He has worked in both the public and private sector across Queensland and currently holds the position of Co-ordinator of Regional Planning and Advocacy at Sunshine Coast Council, where he collaborates across the organisation to achieve long term growth management outcomes. His experience is varied, having formulated strategies and policy for a range of complex urban, rural and environmental issues, as well as managing high-profile development approvals and acting as an expert witness in the Planning and Environment Court (Qld). He has been involved in PIA for around 15 years and held various positions, including Co-convenor of Queensland's Awards for Excellence program.

About PIA

Australia's trusted voice on planning

The Planning Institute of Australia (PIA) is the only national organisation representing urban and regional planners in Australia. PIA (and its predecessor, the Royal Australian Planning Institute) have proudly represented planning professionals in Australia and abroad since 1951. By inspiring and supporting planners through Championing, Leading, Advocating and Educating, we will continue to assist planning professionals to create vibrant cities and thriving communities.

Good planning creates and connects us with places that enhance our health, wellbeing and happiness. It ensures our natural and built environments are resilient and able to respond effectively to emerging megatrends like increased urbanisation and climate change.

Planners – highly qualified and ethical professionals with a broad range of skills and knowledge – are central to delivering great planning outcomes for all our communities.

PIA supports, educates and encourages planners at all stages of their careers through university accreditation, mentoring and professional development programs. Through advocacy, collaboration and influence-building, PIA champions planning's key role in creating communities where fairness, equity and access are fundamental and paramount.

Our business is built on a foundation of good governance, efficient and effective systems, member support services and financial sustainability.

For more information on PIA or to become a member, go to www.planning.org.au



NATIONAL BOARD

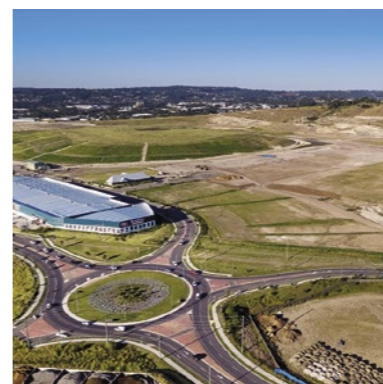
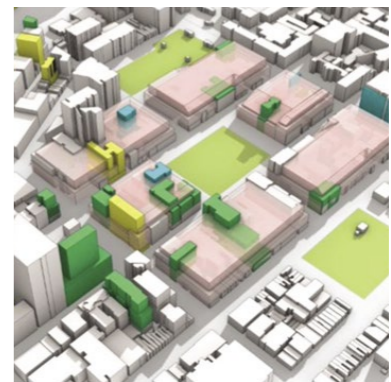
President	Darren Crombie RPIA (Fellow)
Vice-President / Victoria	Nicola Smith RPIA (Fellow)
Vice-President / Tasmania	Emma Riley RPIA (Fellow)
Australian Capital Territory	Imogen Featherstone RPIA
New South Wales	Jenny Rudolph RPIA (Fellow)
Northern Territory	Cindy Robson MPIA
Queensland	Wendy Evans MPIA (Fellow)
South Australia	Stephen Smith RPIA (Fellow)
Western Australia	Ray Haeren MPIA (Fellow)
Young Planner Director	Tom Auckland MPIA

DIVISION PRESIDENTS

Australian Capital Territory	Trevor Fitzpatrick MPIA (Fellow)
New South Wales	Sharon Smith RPIA (Fellow)
Northern Territory	Alexander Deutrom MPIA
Queensland	Shannon Batch RPIA
South Australia	Cate Hart RPIA (Fellow)
Tasmania	Michael Purves MPIA
Victoria	Gabby McMillan MPIA
Western Australia	Vicki Lummer RPIA

Award Winners & Commendations

2022



Young Planner of The Year

18

Young Planner of The Year

This award recognises a Young Planner who has made an outstanding contribution or achieved something significant.

AWARD
NICHOLAS KAMOLS PIA (ASSOC.), QLD

Nick is an innovative, passionate, highly motivated young planner, who is re-defining what it means to be a part of our profession. Nick has already gained expertise across local government, private practice and social enterprise.

Nick has been bridging the gap between academia and planning practice through his Masters of Philosophy and PhD that focus on systemic workplace issues, such as how institutional cultures affect participatory planning, and institutional decision-making processes.

In addition to Nick's academic work, he and his team at PowerWells (a company he co-founded), are repurposing used lithium-ion batteries, paired with

solar panels, to give renewable energy to off-grid communities in Indonesia. Around 200 homes now have renewable electricity and 7,000 battery cells have been saved from landfill.

Nick has also contributed strongly to others' professional development and he was, until recently, the Convenor of the Queensland Young Planners committee. Nick is receiving this award because he is an inspiration to all planners, young and old. Nick is already an established leader and is an excellent professional by any standard. He has achieved so much in 5 years and will continue to forge new paths, defy archetypes, push boundaries, innovate and inspire all of those around him for a long time to come. He is deserving of the 2022 National Young Planner of the Year.



Category Sponsor



19

Young Planner of the Year

COMMENDATION
ALEXANDRA FAURE
MPIA, VIC

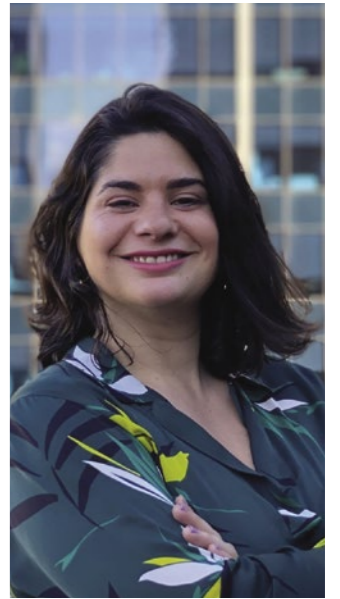
Alexandra Faure is an impressive young planner who has already made an outstanding contribution to the planning profession. As a student planner at Tract Consultants, Alexandra was involved in the Department of Environment, Land, Water and Planning's Smart Planning program. Her work on modernising Planning Schemes by translating Local Planning Policy Frameworks into the new Planning Policy Framework, was highly valued by the Department and councils she worked with, including Murrindindi which was the first Planning Policy Framework translation gazetted in Victoria.

Driven by a strong conviction that the planning and development industry must play its part in the transition to a safe climate and sustainable future, the judges were impressed by Alexandra's leadership and commitment to

achieve this goal. As a co-founder of Planners Declare, Alexandra facilitated a workshop delivered as part of Melbourne Design Week - 'Beyond Declarations of Intent - Town Planning as a Tool for Climate Action'.

Alexandra leads Tract's sustainability planning work and has made a positive contribution to the wider industry as a member of the organising committee for the Sustainable Living Festival. Alexandra offered 'pro-bono' assistance to obtain a permit for a 500-person 'place of assembly' music festival with a sustainable ethos, held in Gippsland.

Having been mentored by others early in her career, Alexandra has keenly reciprocated and mentored planners within her organisation, Women's Planning Network and Planners Declare. It is evident that Alexandra is making an exceptional contribution to the planning profession and she is a very worthy recipient of this commendation.



Category Sponsor



Aboriginal & Torres Strait Islander Planning

20 Aboriginal & Torres Strait Islander Planning

Aboriginal & Torres Strait Islander Planning

This award recognises outstanding Aboriginal and Torres Strait Islander planning projects at all scales undertaken with and/or by Aboriginal and Torres Strait Islander peoples or communities which embrace and integrate Aboriginal and/or Torres Strait Islander culture as a foundation of the project.

AWARD TO MISSIONS CONNECT PROJECT
REENA TIWARI & JIM MORRISON, CURTIN UNIVERSITY, WA

This collaborative approach to planning involved engaging directly with Aboriginal & Torres Strait Islanders to create a platform for storytelling.

Missions Connect seeks to document the State Heritage-Listed site of Mogumber Mission and the memories and lived experiences of the Stolen Generations Survivors. To do this, it worked with the survivors and Bringing Them Home WA Inc to build a better understanding of events and their impacts on Aboriginal people. To manage the

sensitive information shared by Survivors, the Missions Connect project developed a virtual reality space that can be entered and explored by those seeking to understand the truth of the Stolen Generation.

Missions Connect is a transformative project that will reshape the process of gathering and sharing stories. It has established a process that can assist Planners to support the oldest living culture on earth.

Category Sponsor

 City of HOBART



21 Aboriginal & Torres Strait Islander Planning

Aboriginal & Torres Strait Islander Planning

COMMENDATION EDUCATION AND PLANNING SUPPORT FOR LOCAL ABORIGINAL LAND COUNCILS

PROJECT TEAM DEPARTMENT OF PLANNING AND THE ENVIRONMENT, NSW

This commendation recognises the education and planning support provided by Department of Planning with the Local Aboriginal Land Councils who have faced barriers due to the complexity of the planning and thus preventing participation and engagement with the NSW planning system. Many LALCs did not have immediate and convenient access to important planning information about their landholdings. LALCs are unique and need to participate in the planning system, to ensure creation of housing and job opportunities.

DPE worked with and undertook training, since commencement in 2016, and has delivered support



to 51 LALCs and 3 Aboriginal corporations through a total 24 training sessions across NSW. A number of educational initiatives have been implemented, including:

- ◆ Introduction to the NSW Planning System Training Program
- ◆ Undertaking Planning Analysis Reports
- ◆ Embedded DPE LALC Planners
- ◆ Aboriginal Land SEPP Guideline

The judges that working with and providing opportunities to LALCs can assist towards self-determination over their land. Surveys indicated that 100% of participants would recommend the course. A program like this supports the unique role that LALCs have as significant landowners with cultural, social, and economic interests and provides further capacity building in responsibilities, including statutory obligations.



COMMENDATION LXP INDIGENOUS DESIGN GUIDELINES PROJECT TEAM LEVEL CROSSING REMOVAL PROJECT, VIC

The Indigenous Design Guidelines developed and implemented by the Level Crossing Removal Authority is an outstanding planning project which provides an exemplar for the respectful integration of Indigenous Design narratives in public infrastructure projects. It promotes recognition, understanding, appreciation, awareness and celebrates Aboriginal and Torres Strait Islander culture in the context of land use planning and management.

With a rigorous and transferable methodology, the project demonstrates the benefits of early engagement with Traditional Owners and a collaborative approach to planning and designing with Country.



The Indigenous Design Guidelines have delivered tangible outcomes with community support and engendered a new sense of pride in place. The well documented methodology provides a benchmark for other planning and built environment projects; with a clear process for early engagement, collaboration with Indigenous professionals, respectful integration of Cultural knowledge and narratives and the delivery of innovative outcomes.

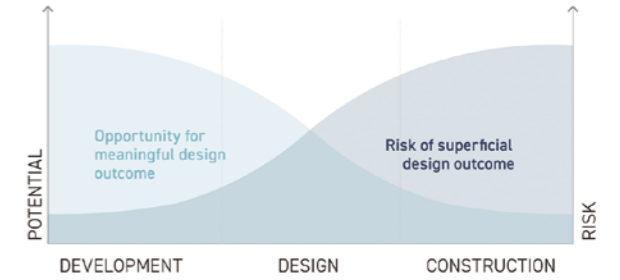


Figure 3 Design opportunities and risks (adapted from Government as Smart Client)



Climate Change & Resilience

24 This award recognises projects and initiatives that provide outstanding leadership and/or innovation that makes a positive impact on addressing climate change and can be held up as case study of best practice for the planning profession

AWARD
PLANNING
FOR NET ZERO
ENERGY BUILDINGS

PROJECT TEAM
CITY OF SYDNEY
COUNCIL, WSP
AUSTRALIA AND
COMMON CAPITAL, NSW

The judges award the Climate Change and Resilience award to the Planning for net zero energy buildings particularly taking into view the leadership undertaken for climate change in planning. The judges commended the extensive collaboration with the industry, local and state government in the creation of this framework, and the opportunity for this to be used as a template across NSW and Australia.

The City of Sydney and consultants collaborated extensively with industry and government to develop energy performance standards for net zero energy buildings, to contribute to reducing these greenhouse gas emissions.

The new performance standards are step change improvements in energy performance in the planning controls to transition buildings to net zero energy by 2026. The performance standards bring together energy efficiency, on-site renewables and off-site renewables to deliver these requirements. The City of Sydney has provided outstanding leadership with this initiative, the evidence behind the justification as to why developers should plan for net zero buildings and leading the approach to strategic and the statutory planning framework.



Category Sponsor

ARUP



COMMENDATION
TOOWOOMBA REGION
BUSHFIRE RISK
ANALYSIS

PROJECT TEAM
TOOWOOMBA REGIONAL
COUNCIL AND
MERIDIAN URBAN, QLD

The detailed analysis undertaken by Toowoomba Region Council (Queensland) and its consultant, Meridian Urban, is to be commended. The work explored the current and future bushfire risk specific to the Toowoomba region and provided unique insights into the social, built environment, infrastructure, natural environment and economic risk profiles for bushfire hazard for each unique community in the region. This, combined with a 'place-based' approach to planning for each community and the inclusion of future fire weather implications of climate change, is unique and more fulsome than traditional approaches. The national applicability of this

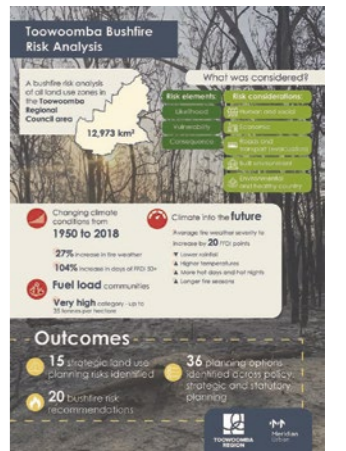
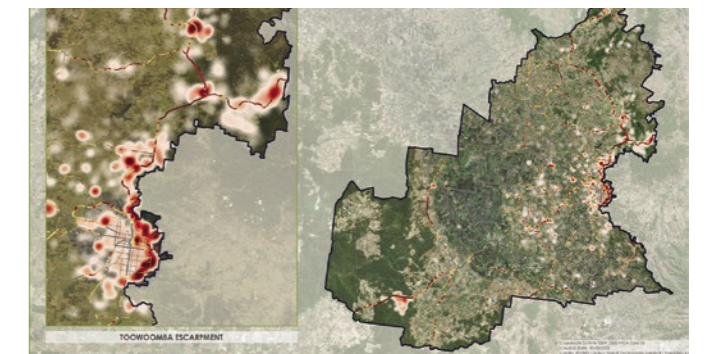
Category Sponsor

ARUP

approach is clear and will influence future work on bushfire impact and resilience.

The judging panel was also impressed with the innovative use of heat mapping which presents an alternative visualisation tool for greater community understanding and awareness of the technical risk factors affecting an area. Recognising the increasing bushfire risk profile of the region over coming decades, the analysis provides the blueprint and tools to proactively position the region (and its settlement pattern) to adapt to changing fire weather under current and future climate influenced conditions.

The judges believe this approach to be best practice and commend its value at a national level, particularly as we plan for a dynamic and changing climate.



Community Wellbeing & Diversity

26 **This award recognises the role of planning in improving access to social infrastructure for residents in cities, regions and towns. The award will celebrate great social planning that assists and supports community cohesion, safety, and supports the culture of diversity.**

AWARD
BACK ON TRACK: POSITIVE ATTENTION TO ROAD SAFETY AND BEHAVIOUR CHANGE USING THE POWER OF THEATRE

PROJECT TEAM
PLANZ TOWN PLANNING, JUTE THEATRE COMPANY, YARRABAH ABORIGINAL SHIRE COUNCIL & ISAAC DRANDIC (PLAYWRIGHT), QLD

This program delivers innovative messages and highly effective engagement with communities. Through the Dare to Dream Program, young people learn about road safety and citizenship by performances featuring positive stories about Indigenous experience and Indigenous

Category Sponsor



professionals as role models.

The educational materials are clear, the engagement with vulnerable youth is to be applauded and the approach Jute Theatre uses is original. The real value to this approach lies with children producing an outcome and helping to lead a conversation with the community about safety. The innovative approach has applicability various planning matters and challenges at a national level. The ability to reach often less engaged demographics is particularly commendable.

The fact that the program has been touring for five (5) years and is changing lives is to be applauded and that's what good planning should deliver. The program demonstrates that planners can deliver a highly engaging program by understanding the opportunities and bringing diverse groups together, not only to deliver land use planning outcomes, but importantly to improve community wellbeing too.

The creative approach to explaining planning and road safety in a way that resonates with the community, along with the adaptability of the program at a national level is worthy of receiving the award for Community Wellbeing and Diversity.



COMMENDATION
REBUILDING MOGO

PROJECT TEAM
ETHOS URBAN AND EUROBODALLA SHIRE COUNCIL, NSW

All the judges acknowledged that with climate change there will be a significant increase in disasters, and the impacts on communities and individuals last a long time past the event itself. The significant bushfires in 2020 demonstrated that our planning system and procurement processes are not set-up well for agile responses.

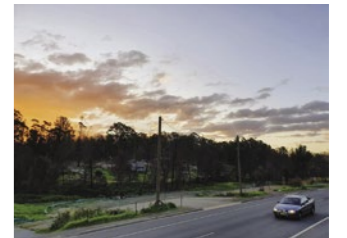
The judges reflected the significant impacts on the Mogo community and recognised the "Rebuilding Mogo Study" was a collaborative project between the Mogo community, Eurobodalla Council and Ethos Urban (who provided pro-bono assistance) to develop guidelines to facilitate re-building.

Category Sponsor



The benefits are both direct, in expediting the physical and economic rebuilding, and immediate through reinforcing community cohesion and wellbeing through the planning process itself, and long-lasting in terms of recreating their community specific place.

The project is innovative in providing a flexible framework for a number of different building typologies that were developed in consultation with the community. This not only allows for streamlined assessment of proposals, but has also supported the short re-building timeframe to get facilities and services to support the community wellbeing again.



27

Community Wellbeing & Diversity

Great Place

This award recognises a great place, street or neighbourhood. Great places have a true sense of place, cultural and historical interest, community involvement and a vision for tomorrow.

AWARD TO GUWARRI TOWN BEACH PROJECT

PROJECT TEAM
SHIRE OF BROOME
AND JOSH BYRNE &
ASSOCIATES, WA

This project has successfully created an inclusive place that brings together people of all ages, cultures, and abilities. It has used the land and the sea to preserve and build upon the Broome's rich and complex cultural heritage providing a multi-purpose landscape with a range of recreational opportunities, whilst retaining the picturesque vistas over Roebuck Bay and addressing a substantial environmental threat of the eroding pindan cliffs.

It has transformed the area, enhancing its distinctive sense of place, enriching the appeal of the precinct for tourists, all while maintaining community ownership. It provides thousands of visitors an unparalleled vantage point to view the iconic natural phenomena, 'Staircase to the Moon,' and remains a vibrant, well used space for residents.



Category Sponsor



COMMENDATION MARJORIE OKE APARTMENTS

PROJECT TEAM
UNISON HOUSING, VIC

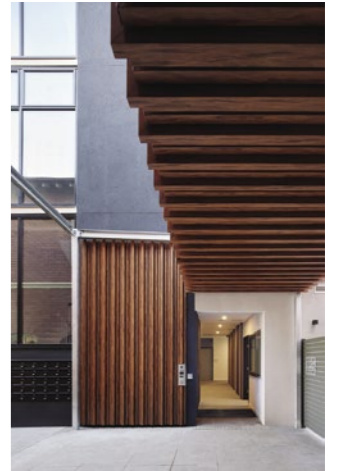
The Marjorie Oke Apartments is a social housing project that combines the reuse of a heritage building with the construction of a new four storey building to provide self-contained apartments for vulnerable women. The buildings also provide facilities for direct enterprise support, tenant engagement and community interaction.

The judges were impressed with how this redevelopment successfully incorporates social housing outcomes, heritage values and broader urban renewal objectives.

Category Sponsor



This site has provided housing for vulnerable women since the 1920s in an inner suburban setting close to a wide range of services and facilities. It demonstrates successful place making and renewal, responding to the changing needs of social housing to create a safe, attractive, and supportive environment for its residents to call home.



Improving Planning Processes

Improving Planning Processes

This award recognises a significant improvement in planning process or major planning reform which leads to good planning outcomes undertaken by a planner, planning authorities (local or state/territory) and development entities.

AWARD TO PLANNING DELIVERY UNIT

PROJECT TEAM DEPARTMENT OF PLANNING AND ENVIRONMENT – PLANNING DELIVERY UNIT, NSW

The judges acknowledge how much planning process improvement is being undertaken across all the states and predominantly by councils or state agencies.

The NSW Department of Planning, Industry and Environment (DPIE), as part of its ongoing Planning reform processes has tackled this problem head on by establishing the Planning Delivery Unit (PDU) in July 2020. The Unit was established to streamline assessment processes, resolve

Category Sponsor



bottlenecks, improve transparency and coordination, resolve issues between state agencies, and to improve the efficiency of the planning system.

The PDU, located within the Office of the Secretary in the DPIE, was established to be the central point of escalation to unblock planning applications that were 'stuck' in the system. The team works with proponents, Local Councils and NSW Government agencies to resolve issues in major development applications, State Significant Developments, planning proposals and precincts so that decisions can be made faster.

The judges considered that the PDU is an innovative approach to managing planning issues in NSW. In particular, the judges were impressed by its customer focus, its emphasis on increasing transparency and its attention on improving both outcomes for individual cases, as well as ongoing planning reform - by gathering ideas on how to improve the planning system across all agencies.



The PDU engaged with 128 Local Councils to identify resources and capacity-building issues to help clear the backlog of local DAs. Further, the judges concluded that the PDU have had a significant impact - supporting over 416 projects worth a combined capital investment value of over \$57 billion to the NSW economy. In these COVID times this planning process improvement was seen as a significant contribution to the economy.



AWARD A PROGRAM OF SHARING - POST BUSHFIRES AND IN THE MIDST OF COVID

PROJECT TEAM EAST GIPPSLAND SHIRE COUNCIL AND BRIMBANK CITY COUNCIL, VIC

The project – A Program of Sharing – Post Bushfires and in the midst of COVID – demonstrated an innovative approach to meet an identified and urgent need for two Councils; East Gippsland Shire Council and Brimbank City Council.

The project demonstrated creativity and agility through a collaboration in the aftermath of the December 2019/January 2020 bushfires. The two Councils established a formal arrangement for the sharing of resources between two municipalities (which are 380 km or a 4-hour drive apart)

Category Sponsor



by sharing workload, knowledge, processes and systems. The project resulted in significant and positive outcomes with wide ranging benefits.

The East Gippsland local government area was significantly affected by the bushfires and experienced a substantial increase in planning applications. At the same time the Brimbank local government area was significantly affected by the COVID pandemic and experienced a noticeable downturn in planning applications. This meant that East Gippsland needed help, and Brimbank had resources to assist.

With the help of Brimbank planners, East Gippsland issued 97 standard and 17 VicSmart permits during the month of December 2020.

The project is highly transferable to other Councils and has demonstrated excellence in planning practice.



Planning Research

32 This award recognises an outstanding achievement in planning research. It is awarded for a substantial piece of planning research which makes an outstanding contribution to the understanding of contemporary issues relating to planning in Australia.

AWARD TO MEASURING HEALTH IMPACTS OF TRANSPORT MODELLING

The interactive tool identifies the health benefits to a population of replacing short car trips with walking and cycling, to provide planners with an evidence base with which to prioritise and advocate for specific outcomes: such as accessible footpaths and the prioritisation of cycling infrastructure.

PROJECT TEAM CENTRE FOR URBAN RESEARCH - RMIT UNIVERSITY, VIC

The project Measuring Health Impacts in Transport Modelling demonstrates an outstanding achievement in planning research which progresses the cause of good planning.

Launched in April 2021, the Transport Health Assessment Tool for Melbourne was developed as part of a partnership project between RMIT University's Centre of Urban Research and the Victorian Department of Transport funded by RMIT University's Enabling Capability Fund.

Category Sponsor

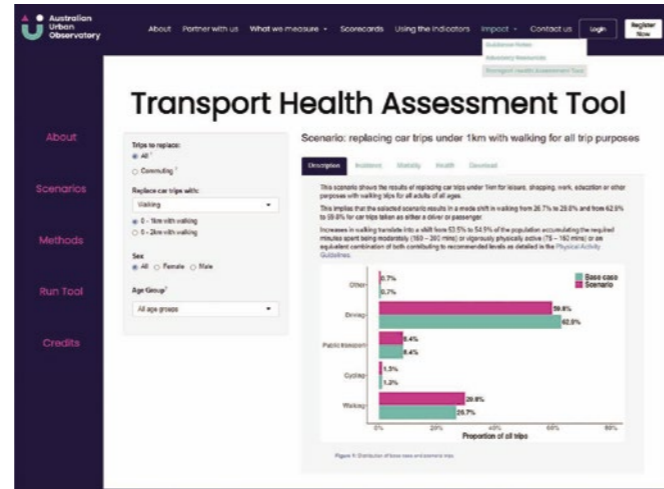


Figure 1: Overview of modelling framework

COMMENDATION FAIRFIELD CITY SECONDARY DWELLINGS STUDY

PROJECT TEAM CRED CONSULTING AND FAIRFIELD CITY COUNCIL, NSW

The judges recognise the huge housing affordability issues across the country and the extent of secondary dwellings have not been fully understood. The Secondary Dwelling Study, undertaken in partnership between Cred Consulting and Fairfield City Council, provides nuanced research in a previously unexplored area of the affordable housing discussion.

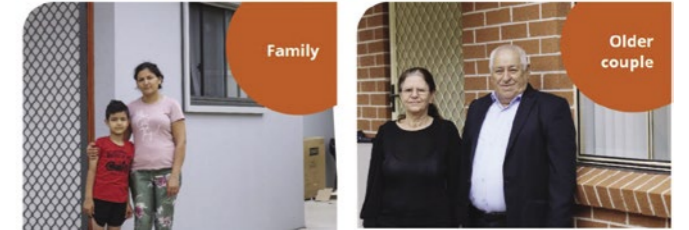
The Secondary Dwelling Study addresses a previously unexplored aspect of affordable housing, and champions additional nuances in Council approaches to planning for affordable housing, so to improve housing outcomes for vulnerable communities.

Category Sponsor



The research identifies that while there is an increase in the number of secondary dwelling developments across Sydney, they are not necessarily affordable with rents of these dwellings in the Fairfield City Council area similar to other private rentals of a similar size. Additionally, the research found that this model of affordable housing does not necessarily provide options for families, but rather that secondary dwellings are home to a diverse range of residents.

The judges congratulate Cred Consulting and Fairfield City Council on this important study into the lived experiences of multi-cultural residents in secondary dwelling housing, as it provides nuanced information for planners to support more effective planning for affordable housing options.

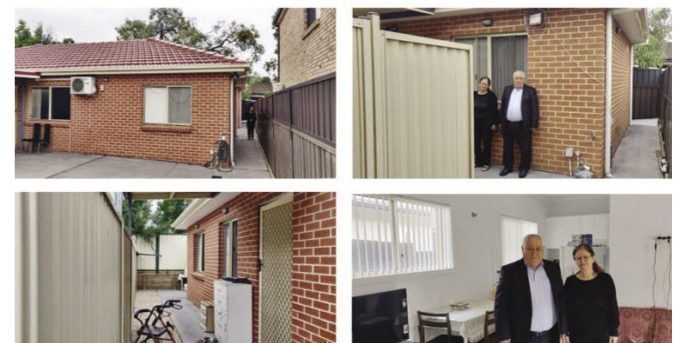


HOUSING SURVEY Fairfield City Council

DO YOU LIVE IN A SECONDARY DWELLING (GRANNY FLAT)?

هل تعيش في "مسكن ثانوي" أو "شقة الجدة" (GRANNY FLAT)?

إذا كنت تعيش في واحدة من هذه الأنواع من المنازل، فإن مجلس مدينة أيرفيلد يريد أن يسمع منك في مساهمتك في دراسة نقوم بها لفهم من يعيش في مساكن ثانوية، وما هي احتياجات مجتمعنا.



33 Planning Research

Stakeholder Engagement

This award recognises initiatives and outcomes in implementing best practice public engagement that achieves genuine collaborative outcomes that leads to improved built form, planning processes or social outcomes.

AWARD TO
GAME ON YOUTH ACTION
PLAN ENGAGEMENT

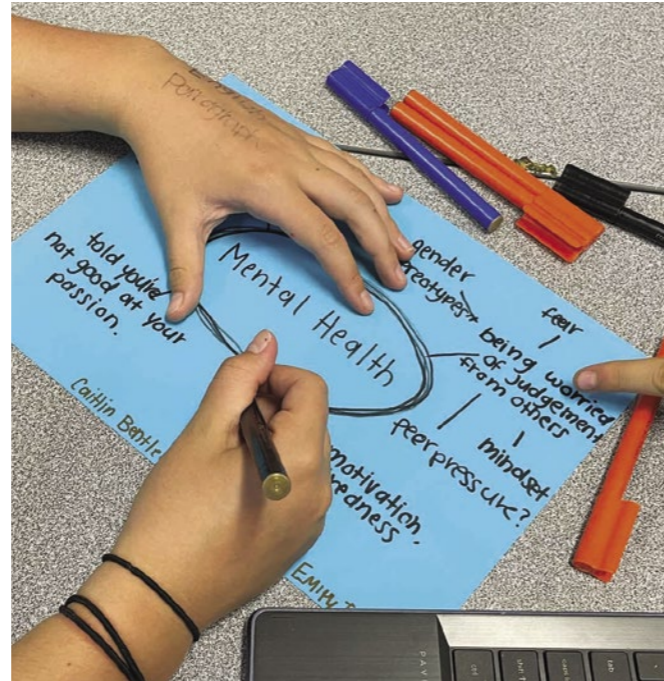
PROJECT TEAM
OFFICE FOR
RECREATION, SPORT
AND RACING AND URPS,
SA

This stakeholder engagement process focussed on understanding how to get more young people active and is a great example of how to ensure that the voices of young people are heard and that we plan with them, not for them.

It demonstrated how to engage with young stakeholders who are often overlooked in planning and other processes and provided a collaborative process that was focussed and well determined.

The stakeholder engagement process demonstrated clear strategic alignment with the overall project and demonstrated a high degree of innovation and the use of innovate concepts in getting young people engaged with the subject matter as well as facilitating discussions that focussed on getting young people to talk about the barriers and opportunities to being more physically active.

The national judging panel noted the originality and innovation of the approach and its adaptability and transferability to a range of stakeholder engagement opportunities and considered it worthy of the national award.



Category Sponsor

**COLIN
BIGGERS
& PAISLEY**
LAWYERS

COMMENDATION
LOGAN VILLAGE PLACE
TO PLAY STAKEHOLDER
ENGAGEMENT

PROJECT TEAM
LOGAN CITY COUNCIL,
QLD

The Logan Village Place to Play Stakeholder Engagement was developed to assist in the design of a new park at Logan Village, Queensland.

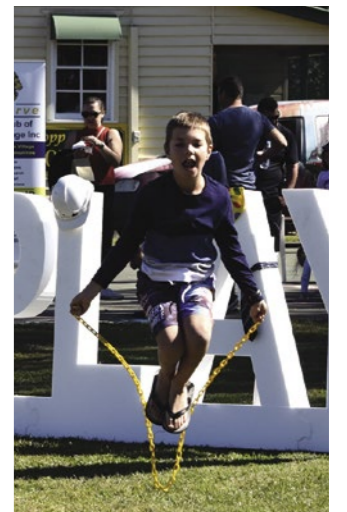
The focus on play and particularly how children use a playground was observed through formal and informal methods, including loose parts play at Council led events ("observations rather than conversations"). The approach provided a unique and innovative method of consultation not seen elsewhere. The design exercise was inclusive with a range of cultures and ages; and included

Category Sponsor

**COLIN
BIGGERS
& PAISLEY**
LAWYERS

engagement at schools as well as a community event. Over 500 design ideas were compiled from the local community, demonstrating how effective the approach was to engaging those who will use the playground most but are traditionally less involved in the design process.

The project is to be commended for its inclusive and alternative approach to consultation with the local community. The judges felt that the project provided completely different way of approaching playground design and engagement, by providing for interactive consultation in collaboration of children of various ages, abilities and cultures. This style of engagement is exemplary and could easily be applied at a national scale and transferred to other projects involving designing places for children.



Strategic Planning Project

36 This award recognises an outstanding strategic planning project, which includes regional plans, structure plans, master plans, infrastructure plans, planning schemes and similar.

AWARD TO TOWN OF VICTORIA PARK DRAFT TRANSPORT STRATEGY AND PARKING MANAGEMENT PLAN

PROJECT TEAM TOWN OF VICTORIA PARK, WSP AND AUSTRALIAN PARKING CONSULTANTS, WA

The project interprets the NSW Movement and Place Framework and applies it to an inner-city area experiencing long term growth, accelerated by urban densification and functioning as a movement corridor between Perth and the SE suburbs. Transport infrastructure in the area is attracting significant external investment

and the obvious benefits need to be balanced with useful local outcomes. The unique feature of this project has been to integrate a Transport Strategy focussed on local accessibility with a Parking Management Plan, both developed in the light of community aspirations in the form of "user mindset analysis".

This integrated approach has resulted in specific initiatives that are being implemented along with the Town's other works and community programs. These are now embedded in the Town's corporate planning system which adds the extra discipline of corporate governance, such as priorities, budgeting and risk assessment.



Figure 5.6 Existing Movement and Place Classification

Figure 5.7 Future Movement and Place Classification



Category Sponsor



MACQUARIE POINT DEVELOPMENT CORPORATION

Technology & Digital Innovation

Digital opportunities and adapting technology to assist planning in our changing environment is critical. This award recognises the value that digital innovation and technology processes provide for planners, planning authorities and development entities.

AWARD TO
SMARTER HOBART
CHALLENGE: BUS
SHELTER AND DIGITAL
INTERFACE DESIGN

PROJECT TEAM
CITY OF HOBART
CONNECTED CITY, TAS

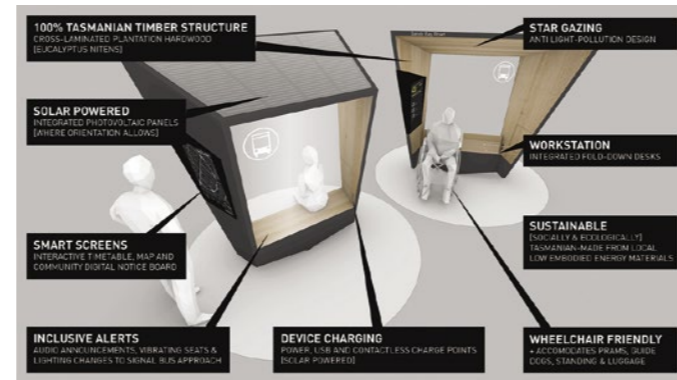
The project is an exemplary example using Integrated Digital Interface Design to deliver an innovative and visionary approach to developing bespoke public infrastructure to drive public transport uptake, underpinned by the desire to create cleaner, greener, and safer cities.

The Smarter Hobart Challenge – Bus Shelter and Integrated Digital Interface Design competition was a co-design challenge, harnessing innovation to create

personalised location-aware experiences integrated with appropriate weather protection and equitable access.

The successful solution by Supermanoeuvre presented an end-to-end, computational design and fabrication process using parametric design and automated manufacture, enabling shelters to be configured to each site and constructed from locally sourced sustainable materials. The approach integrates an augmented reality process meaning that a shelter can be viewed and configured on-site (through VR goggles) before being approved for manufacture.

The project is a worthy winner given its approach is sustainable, community-inclusive and technologically innovative.



Category Sponsor



COMMENDATION
SUNLIGHT TO PARKS

PROJECT TEAM
THE CITY OF
MELBOURNE, HODYL &
CO, SJB ARCHITECTURE,
SUSAN BRENNAN
SC, JORDAN WRIGHT,
DANIEL SMITH &
MARCUS WRIGHT, VIC

The project marks a new chapter in planning by innovatively applying technology to determine the total effect of shadow on public spaces from all existing and possible built forms in a rapidly growing city.

The project applied geographic information systems technology to develop three-dimensional modelling of the cumulative effect of the built form on sunlight access to open spaces between set timeframes. The project applied an innovative park typology system to govern shadow differently in response to local land use and development rather than the traditional hierarchy of parks.

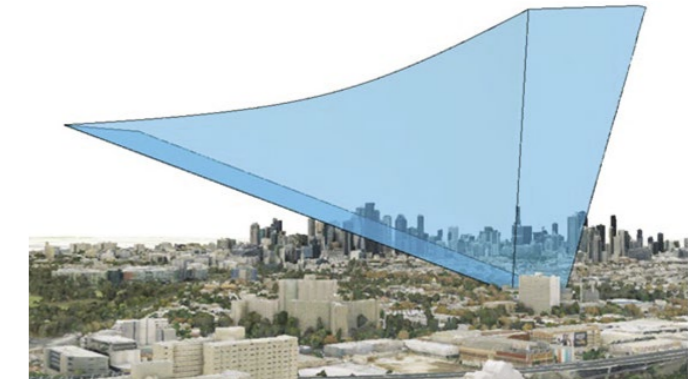
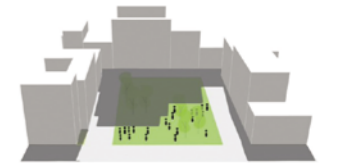
Category Sponsor



The expert input and modelling and the considerable collaboration with the community, including 565 community members, informed the project and its development. The project is highly commended, providing an excellent example of the application of technology and digital innovation that has led to planning scheme amendments and improved planning practice outcomes.

What was the project challenge?

The sunlight to open space project was designed to solve a difficult design challenge - how to protect the right to sunlight in a growing city? A lack of effective design policy guidance meant that sunlight access to parks was continually being eroded in Melbourne by new development.



Tertiary Student Project

Tertiary Student Project

Tertiary Student Project

40 This award recognises outstanding planning work by an individual or group of tertiary students. It is awarded for a substantial project, report, book, thesis, article or piece of research which makes a significant contribution to planning and development outcomes.

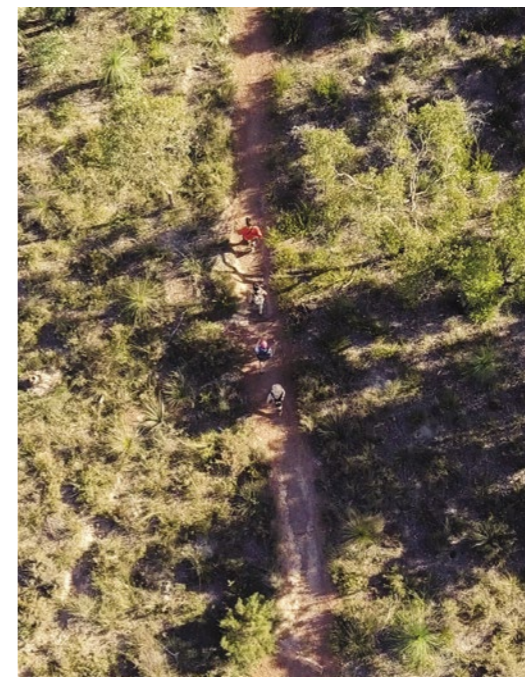
AWARD TO THE ART EFFECT: ENHANCING USER EXPERIENCE ON HIKING TRAILS THROUGH THE PLANNING AND DESIGN OF ART

PROJECT TEAM
REUBEN BLACK, WA

Reuben Black's dissertation 'The Art Effect: Enhancing User Experience on Hiking Trails Through the Planning and Design of Art' applies the established planning principle of place activation through art to hiking trails, demonstrating the ubiquity of good planning which respects the context of the place. The research undertaken

is appropriately broad reaching beyond the planning profession encompassing a wide range of experts which add value to the project. The approach taken respects Indigenous values as an integral part of the hiking experience and offers guidelines for art placement so as not to distract the trail user from the natural surroundings. Communicating the findings through the media of film is an innovative solution to the problem of inaccessibility of published research to the public through social media and online. It serves as a teaser for the main research document to the professional audience. The walking interview style allows the viewer to experience the environment while simultaneously hearing the commentary on the research, findings and recommendations. This method of communication is highly transferable and aids memory retention though storytelling.

Category Sponsor



Tertiary Student Project

41

Tertiary Student Project

Tertiary Student Project

42 **COMMENDATION MELBOURNE 2050: SCENARIO PLANNING FOR A CITY OF 20-MINUTE NEIGHBOURHOODS**

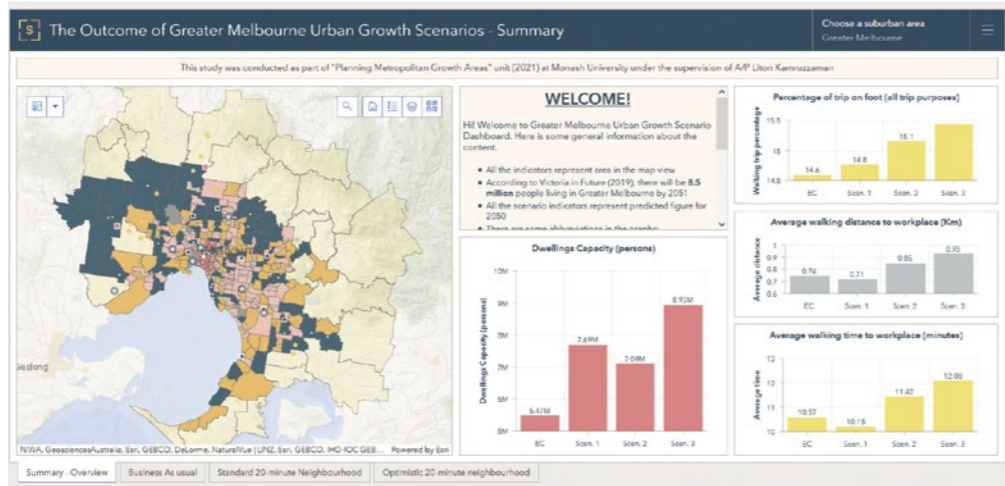
PROJECT TEAM
STELLA SINAGA,
MONASH URBAN
PLANNING AND DESIGN,
VIC

The judges were impressed with this high-quality tertiary student project, which focused on better understanding and further exploring the emerging 20-minute neighbourhood within a growth area context.

The research offers a new approach to urban growth management by simulating urban growth patterns over the next 30 years, developing alternative growth management scenarios, and predicting and evaluating their outcomes.

To complement the final report, Stella also presented her findings through an online platform, including interactive maps.

Category Sponsor



43 **COMMENDATION EXTREME HEAT AND URBAN DESIGN: HOW CAN URBAN DESIGN POLICY PLAY A GREATER ROLE IN MITIGATING HEAT-HEALTH RISKS?**

PROJECT TEAM
RYAN MCNEILLY SMITH,
UNIVERSITY OF THE
SUNSHINE COAST, QLD

With growing awareness of the impacts of heat and heatwaves across Australia, Ryan McNeilly Smith investigated how urban design policy can play a greater role in mitigating heat-health risks. Noting the limited policy response to this growing issue, his body of work identifies that with the current climate emergency, planning and urban design's role must include stronger statutory policy.

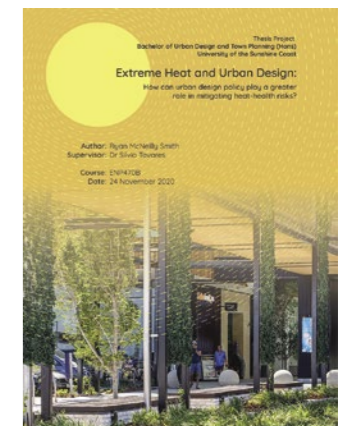
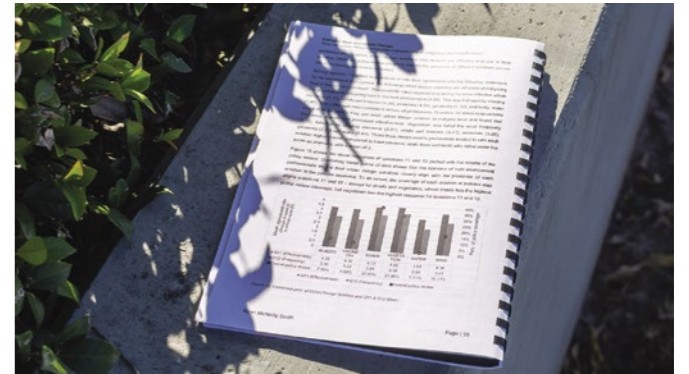
Involving a mixed method approach including policy review and engagement with built environment professionals,

Category Sponsor



McNeilly Smith's work highlighted the relevance of heat and heatwaves to planning in Queensland in the context of how other natural hazards are managed and examined the contribution that planning and urban design (through statutory policy) can play in mitigating this issue. The work identified challenges with practitioner's knowledge of this issue and advocates for greater professional development opportunities in heat-mitigation urban design strategies. The work has national applicability and aligns well with PIA's strategic priorities for addressing climate change through planning response.

The judges found McNeilly Smith's *Extreme Heat and Urban Design: How can urban design policy play a greater role in mitigating heat-health risks?* to be an outstanding tertiary student project, noting particularly its relevance and application to contemporary planning practice and built environment outcomes right across the nation.



Tertiary Student Project

2022 Award Nominations

2022 Award Nominations

44

ABORIGINAL & TORRES STRAIT ISLANDER PLANNING

Education and Planning Support for Local Aboriginal Land Councils

Department of Planning and the Environment | NSW

LXRP Indigenous Design Guidelines

Level Crossing Removal Project | VIC

Kaurna Kardla Parranthi Cultural Burn

Kaurna Yerta Aboriginal Corporation, City of Adelaide and Green Adelaide | SA

Missions Connect

Reena Tiwari & Jim Morrison, Curtin University | WA

CLIMATE CHANGE & RESILIENCE

Toowoomba Region Bushfire Risk Analysis

Toowoomba Regional Council and Meridian Urban | QLD

Planning for Net Zero Energy Buildings

City of Sydney Council, WSP Australia and Common Capital | NSW

Greater Dandenong Climate Emergency Strategy and Action Plan 2020-2030

Greater Dandenong City Council | VIC

Wharf Street Basin - The Next Generation Smart Community Park

City of Canning | WA

COMMUNITY WELLBEING & DIVERSITY

Back on track: Positive Attention to Road Safety and Behaviour Change using the Power of Theatre

Planz Town Planning, JUTE Theatre Company, Yarrabah Aboriginal Shire Council & Isaac Drandic (playwright) | QLD

Rebuilding Mogo

Ethos Urban and Eurobodalla Shire Council | NSW

Downer Residential Precinct

CHC Australia | ACT

Accessible Destinations in the Southern and Hills LGA

AtSouthern and Hills Local Government Association, Penny Worland Consulting, URPS, WAX Design, Able Access Design and Grassroots Consulting | SA

GREAT PLACE

Fish Lane Town Square

Aria Property Group, Richards & Spence, RPS Group, Urbis & Shape Construction | QLD

The Station Precinct

Hunter and Central Coast Development Corporation | NSW

Marjorie Oke Apartments

Unison Housing | VIC

Taylor Riverfront Precinct

Jensen PLUS, Renmark Paringa Council, Tonkin Consulting and Crackerjack Consulting Engineers | SA

Guwarri Town Beach Project

Shire of Broome and Josh Byrne & Associates | WA

IMPROVING PLANNING PROCESSES

Statutory and Non-statutory Land Management Tools for Threatened Species + Ecological Communities

Kelly Reaston Development and Property Services, Planz Town Planning, Terrain NRM & Far North Queensland Regional Organisation of Councils | QLD

Planning Delivery Unit

Department of Planning and Environment – Planning Delivery Unit | NSW

ACT Planning System Review and Reform - Project Directions Papers

ACT Government - Environment, Planning and Sustainable Development Directorate | ACT

A Program of Sharing - Post Bushfires and in the Midst of COVID

East Gippsland Shire Council and Brimbank City Council | VIC

LGA Planning Reform Program, Advance-Assist-Advocate

Local Government Association of South Australia | SA

PLANNING RESEARCH

Protect the Brisbane Backyard! (Except from subdivision for additional house construction)

Rachel Gallagher, The University of Queensland | QLD

Fairfield City Secondary Dwellings Study

Cred Consulting and Fairfield City Council | NSW

Measuring Health Impacts of Transport Modelling

Centre for Urban Research - RMIT University | VIC

Local Government and Affordable Housing in Non-Metropolitan Australia: An Analytics of Government

Dr Jessica Porter | SA

Continental Suitability Analysis To Underpin a National Urban Policy for Australia

Associate Professor Julian Bolleter, Bill Grace, Professor Robert Freestone & Dr Paula Hooper | WA

STAKEHOLDER ENGAGEMENT

Logan Village Place to Play Stakeholder Engagement

Logan City Council | QLD

Engagement to Inform the Oxford Street Strategic Review

Cred Consulting | NSW

Land Release Sites in the Belconnen Town Centre Place Design Brief

Suburban Land Agency, PLACE Laboratory, Town Team Movement, TAKTICS4 and Murrumatters | ACT

Williamstown Maritime Precinct Framework

GHD and Freight Victoria in the Department of Transport | VIC

Game On Youth Action Plan Engagement

Office for Recreation, Sport and Racing and URPS | SA

High Wycombe Station Shared Path Community Engagement Project

WA Department of Transport and the City of Kalamunda | WA

STRATEGIC PLANNING PROJECT

Greater Dandenong Open Space Strategy 2020-2030

Greater Dandenong City Council, SJB Urban (now Lat37), Urban Enterprise & Social Fabric Planning | VIC

North Queensland Regional Plan 2020

Regional and Spatial Planning, Planning Group, Department of State Development, Infrastructure, Local Government and Planning | QLD

Local Infrastructure Planning for the Aerotropolis

Penrith City Council, Liverpool City Council, IDC and GLN Planning | NSW

University of Canberra Campus Master Plan

MGS Architects with Turf Design Studio, New Learning Environments, Canberra Town Planning, WSP, Waters Consulting and Vector Consulting | ACT

State Sports Park

Jensen PLUS and Office for Recreation Sport and Racing | SA

Town of Victoria Park Draft Transport Strategy and Parking Management Plan

Town of Victoria Park, WSP and Australian Parking Consultants | WA

TECHNOLOGY & DIGITAL INNOVATION

A Smart Planning Certificate Framework

Coffs Harbour City Council | NSW

Smart Design: Disruption, Crisis, and the Reshaping of Urban Spaces

Richard Hu, University of Canberra | ACT

Sunlight to Park

The City of Melbourne, Hodyl & Co, SJB Architecture, Susan Brennan SC, Jordan Wright, Daniel Smith & Marcus Wright | VIC

Smarter Hobart Challenge: Bus Shelter and Digital Interface Design

City of Hobart Connected City | TAS

Missions Connect

Reena Tiwari & Jim Morrison, Curtin University | WA

TERTIARY STUDENT PROJECT

Extreme Heat and Urban Design: How Can Urban Design Policy Play a Greater Role in Mitigating Heat-health Risks?

Ryan McNeilly Smith, University of the Sunshine Coast | QLD

Reinventing the PPS Place Diagram - A Case of Urban Squares

Eshita Dutia | NSW

Melbourne 2050: Scenario Planning for A City of 20-minute Neighbourhoods

Stella Sinaga, Monash Urban Planning and Design | VIC

Improving Walkability to Support Grocery Store Accessibility for Older Adults in Disadvantaged Neighbourhoods: A Case Study of Glenorchy, Tasmania

Thi Kim Anh Nguyen, Master of Planning Student, University of Tasmania (Supervised by Dr Kate Booth)

'The RailYard' Lot 300, Prospect: Masterplan

Nancy Cromar & Daniel Marotti, UniSA Master of Urban & Regional Planning Program | SA

The Art Effect: Enhancing User Experience on Hiking Trails Through the Planning and Design of Art

Reuben Black | WA

YOUNG PLANNER OF THE YEAR

Nicholas Kamols PIA (Assoc.) | QLD

Phoebe Wilkinson | NSW

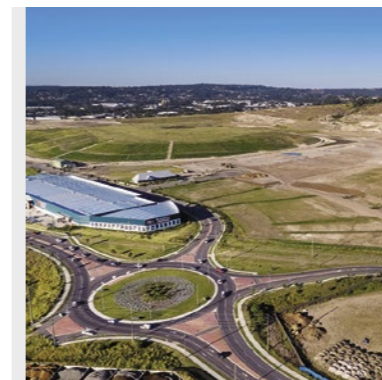
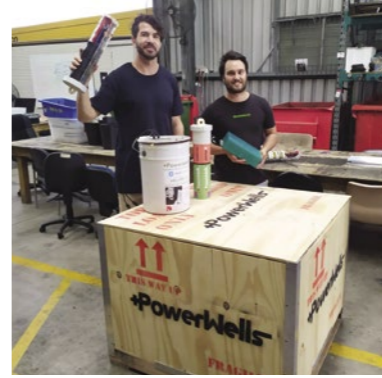
Alexandra Faure MPIA | VIC

Payal Patel | TAS

Bec Didcoe | WA

45

2022 Award Nominations





Planning
Institute
Australia

The Planning Institute of Australia (PIA) is the national body representing planning and the planning profession. Through education, advocacy, and professional development, PIA is the pivotal organisation serving and guiding thousands of planning professionals in their role of creating better communities.

PIA currently represents over 5400 members nationally and internationally, and connects with more than 10,000 planners annually.

PIA's goal is to support the Australian planning profession to create diverse, cohesive and liveable communities, vibrant economies, and sustainable places.

Contact PIA

For information on PIA policies, events, activities, initiatives or to become a member.

PO Box 5427
Kingston ACT 2604
membership@planning.org.au
www.planning.org.au